



GAT MONTHLY MEMBERSHIP PROGRESS REPORT

Results as of: 5/31/2023

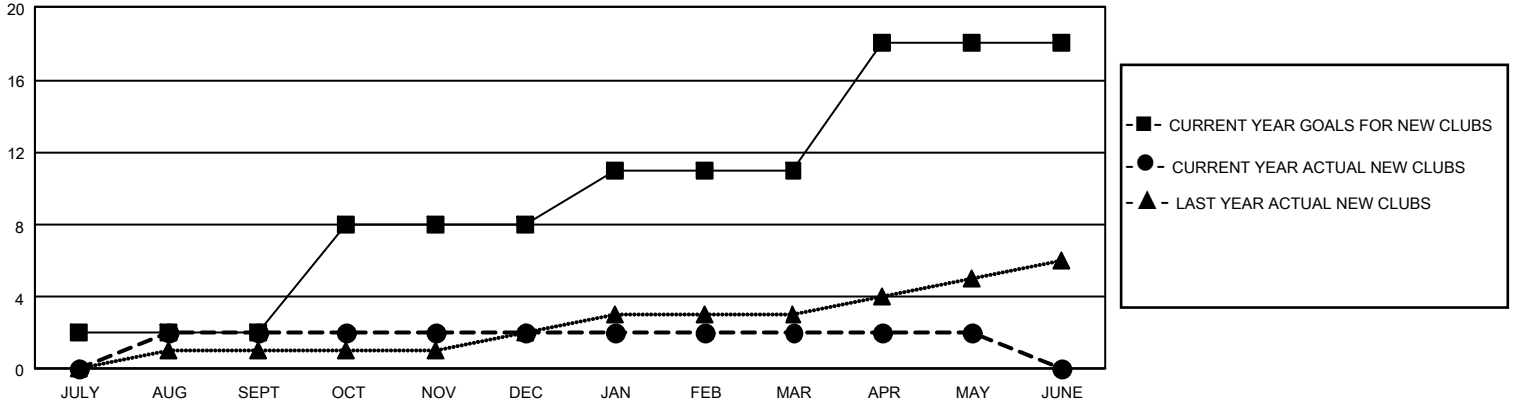
GMT Constitutional Area 1, Group N

REPORT DOES NOT INCLUDE CLUBS IN UNDISTRICTED AREAS.

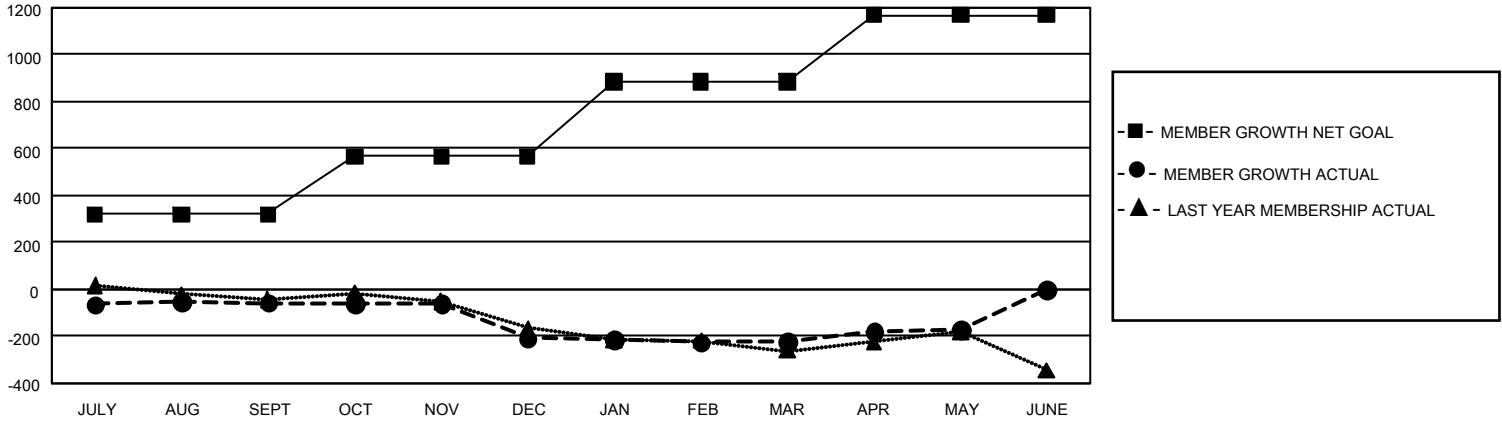
Clubs			
RESULTS FOR 2022-2023			
QUARTER	NEW CLUB GOAL	NEW CLUBS	DROPPED CLUBS
JULY/AUG/SEPT	6	2	4
OCT/NOV/DEC	18	0	6
JAN/FEB/MAR	9	0	4
APR/MAY/JUNE	21	0	1

Members			
RESULTS FOR 2022-2023			
QUARTER	MEMBER GROWTH NET GOAL	MEMBER GROWTH ACTUAL	DROPPED MEMBERS ACTUAL (including transfers)
JULY/AUG/SEPT	319	350	378
OCT/NOV/DEC	247	301	423
JAN/FEB/MAR	320	343	330
APR/MAY/JUNE	282	252	187

GOALS AND ACTUAL NEW CLUBS CUMULATIVE



GOALS AND ACTUAL MEMBERS CUMULATIVE



DROPPED CLUBS: 15	299 CLUBS OF 544 ADDED 1 OR MORE NEW MEMBERS	GENDER DISTRIBUTION	
		MALE 7,708 (63.63%)	FEMALE 4,398 (36.31%)
DROPPED MEMBERS		NON BINARY 1 (0.01%)	PREFER NOT TO ANSWER 6 (0.05%)
DECEASED 187	CLICK HERE FOR CUMULATIVE MEMBERSHIP DATA	TOTAL FAMILY UNIT MEMBERS 2,305	
CLUB CANCELLED 41		FAMILY MEMBERS PAYING HALF DUES 1,181	
OTHER 1,089			
TOTAL 1,317			